




Cy Twombly, Untitled (Lexington), 2001; Untitled (Lexington), 2003; Untitled (Rome), 1953/1989;
Untitled ("THE MATHEMATICAL DREAM OF ASHURBANIPAL") (Lexington), 2000



Found objects!



☞ People always want to know what the material components are, that helps them to identify the work with something. But I want each sculpture to be seen as a whole, as a sculpture. (1)

 Sculpture, upcycling

☞ White paint is my marble. (2)

- ▷ Search for discarded boxes, pieces of wood, pipes, whatever you can find.
- ▷ Bring them together into a form.
- ▷ Use gypsum and a color of your choice as a glue and a compound.
- ▷ What significance does your chosen color have for you?

Cy Twombly named his works after places, persons, feelings, or was inspired by history and mythology.

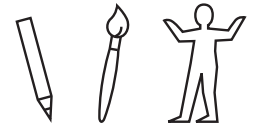
- ▷ What inspired you to make your sculpture?
- ▷ What have you called it?

✿ (without gypsum and paint):

- ▷ Place your found objects together.
- ▷ Illuminate them with a strong light source: Your “sculpture” emerges in the shadow!

THINK

What effect does the white “facade” in Cy Twombly’s sculptures have? What effect does white paint have? What do you associate with the color white?



Found objects, wire, nails, thread, liquid paint, gypsum

✿ Light source